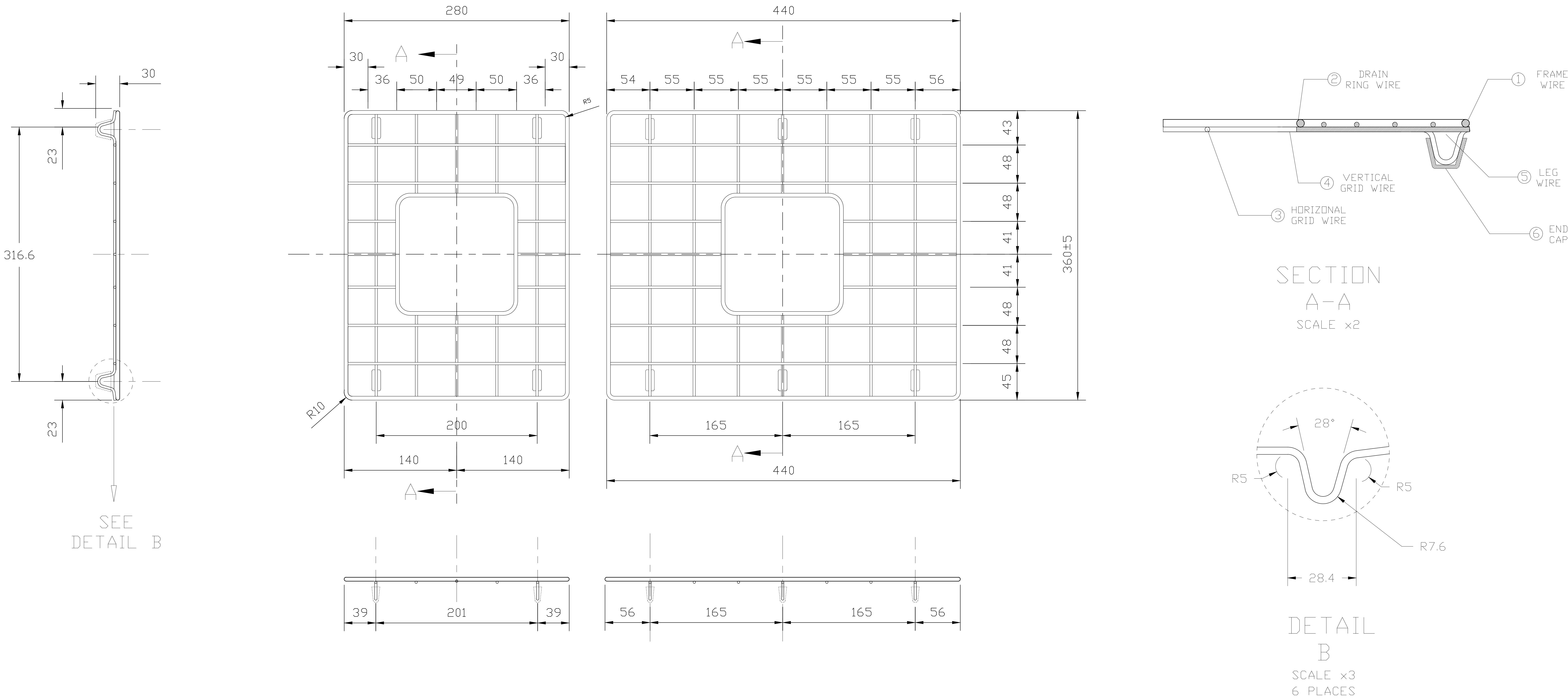


For sink: 1694 RECTANGULAR

Grid Code: 2300 2070 (large side)

2300 2071 (small side)

6	6	END CAP	7301777-101	
5	A/R	WIRE, LEG × Ø118 [Ø3.00mm]	302 OR 304 STAINLESS STEEL	4
4	A/R	WIRE, VERTICAL GRID × Ø118 [Ø3.00mm]	302 OR 304 STAINLESS STEEL	4
3	A/R	WIRE, HORIZANAL GRID × Ø118 [Ø3.00mm]	302 OR 304 STAINLESS STEEL	4
2	A/R	WIRE, DRAIN RING × Ø188 [Ø4.80mm]	302 OR 304 STAINLESS STEEL	
1	A/R	WIRE, FRAME × Ø188 [Ø4.80mm]	302 OR 304 STAINLESS STEEL	
ITEM	-401 QTY	DESCRIPTION	MATERIAL	NOTES



5. SINK RACK SHALL BE FREE OF DIRT, OILS AND DEBRIS.
4. WIRES SHALL NOT OVERHANG FRAME WIRE
3. SPECIFIED SOURCE(S) OF SUPPLY:

2. FINISH: ELECTROPOLISH
1. MATERIAL SPECIFICATION: 302 OR 304STAINLESS STEEL
NOTES: UNLESS OTHERWISE SPECIFIED

Created by COSKUN - DEDE		Tolerance Except Noted	Angles ±1° Lenghts ±3MM	Replaces Document	
Company	BOCCHI	Product To Fit Sink 1694: (2070 code= large basin side) / (2071 code= small basin side) 34×19×10 INCH BOCCHI SINK RACK [STEP RIM]		Product no 2300/2070 2300/2071	
Material	SEE NOTE 1			Created Date 29.08.2025	Scale 1/1
Finish	SEE NOTE 2			Document Number —	
		Product name 1694-/47-WIRE			